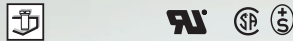
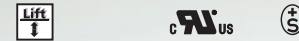
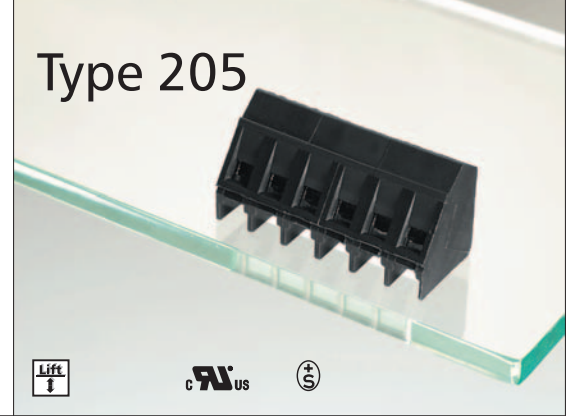




# Type 05



# Type 205



### Note for wire range

Additional wire sizes and/or combinations of same size wires as follows:

#### Type 05

#(2) Wire range extended to No. 26 AWG for factory-wiring.

Two same size wires 22 - 16 AWG Cu, Sol/Str for field; No. 26 - 16 AWG Cu, Sol/Str for factory.

+ Two same size wires No. 22 - 16 AWG Cu, Sol/Str for field-wiring; No. 30 - 16 AWG Cu, Sol/Str factory-wiring.

### Description Type 05

Screw type terminal block, solderable, centerline 5 mm / 0.197 inches, wire entry 45°, wire protector

### Technical Data Type 05

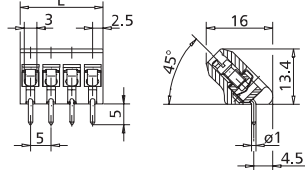
**UL** V / A / AWG 300 / 20 / 22 - 12 #(2), + (see note)

**VDE** V / A / AWG 300 / 15 / 22 - 12 #(2), + (see note)  
Screw torque max. 6 lbs.-in

**CE** 0.08 - 2.5 mm<sup>2</sup> 250 V / 2.5 kV / 3 / 16 A  
Insulation co-ordination according to IEC 664-1  
Clearance and creepage distance ≥ 2.6 mm  
Screw torque max. 0.5 Nm

Wire diameter single wire 0.4 - 2.2 mm  
Wire strip length 8 mm / 0.315 in.  
Solder pin 1 mm / 0.039 in. dia. recommended pc board hole dia. 1.3 mm / 0.051 in.  
Solder pin length 5 mm / 0.197 in.  
Pole size 2 to 12  
Color black

Dimensions in mm 1 mm = 0.0394 in.



$L = (\text{pole size} - 1) \times \text{centerline} + 5 \text{ mm} / 0.197 \text{ in.}$

### Description Type 205

Screw type terminal block, solderable, centerline 5 mm / 0.197 inches, wire entry 35°, lift system

### Technical Data Type 205

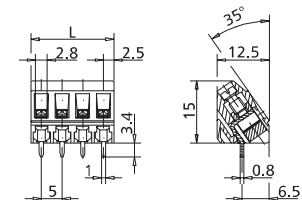
**UL** V / A / AWG 300 / 15 / 28 - 12

Screw torque max. 6 lbs.-in

**CE** 0.08 - 2.5 mm<sup>2</sup> 250 V / 4 kV / 3 / 15 A  
Insulation co-ordination according to IEC 664-1  
Clearance and creepage distance ≥ 3.2 mm  
Screw torque max. 0.5 Nm

Wire diameter single wire 0.3 - 2.3 mm  
Wire strip length 8 mm / 0.315 in.  
Solder pin 0.8 x 1 mm 0.031 x 0.039 in. recommended pc board hole dia. 1.4 mm / 0.055 in.  
Solder pin length 3.4 mm / 0.134 in.  
Pole size 2 to 24  
Color black

Dimensions in mm 1 mm = 0.0394 in.



$L = (\text{pole size} - 1) \times \text{centerline} + 5 \text{ mm} / 0.197 \text{ in.}$

### Part numbers (P/N)

#### Type 05

centerline 5 mm / 0.197 inches

P/N 310051

Complete the part number by adding the pole size.

|  |    |    |    |    |    |    |    |
|--|----|----|----|----|----|----|----|
|  | 02 | 03 | 04 | 05 | 06 | 07 | 08 |
|  | 09 | 10 | 11 | 12 |    |    |    |

### Part numbers (P/N)

#### Type 205

centerline 5 mm / 0.197 inches

P/N 312051

Complete the part number by adding the pole size.

|  |    |    |    |    |    |    |    |
|--|----|----|----|----|----|----|----|
|  | 02 | 03 | 04 | 05 | 06 | 07 | 08 |
|  | 09 | 10 | 11 | 12 | 13 | 14 | 15 |
|  | 17 | 18 | 19 | 20 | 21 | 22 | 23 |
|  | 24 |    |    |    |    |    |    |

#### Type 205

centerline 10 mm / 0.394 inches

P/N 312052

|  |    |    |    |    |    |    |    |
|--|----|----|----|----|----|----|----|
|  | 02 | 03 | 04 | 05 | 06 | 07 | 08 |
|  | 09 | 10 | 11 | 12 |    |    |    |

**02** Standard pole sizes  
**07** Available on demand. Minimum order quantity 5000 poles per item.

**02** Standard pole sizes  
**13** Available on demand. Minimum order quantity 5000 poles per item.